

MAKEOVER

Conversions and Extensions of Homes and
Residential Spaces

Chris van Uffelen

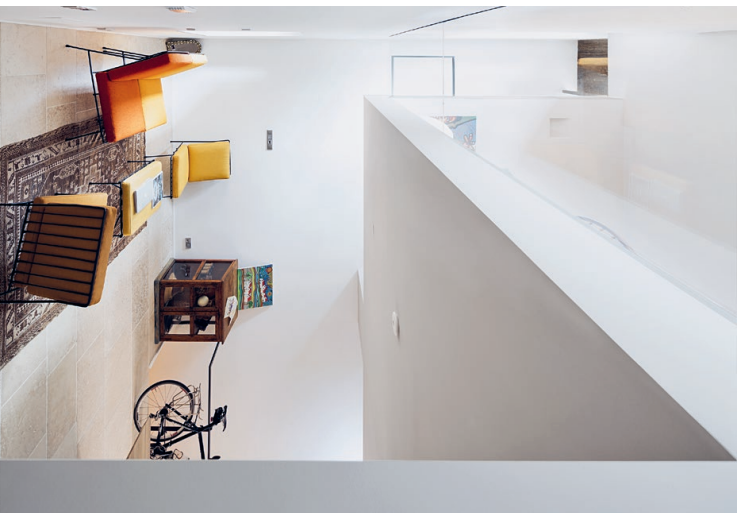


BRAUN

VILLA CITTÀ STUDI

CHALLENGE: TO DESIGN A HOME THAT IS BRIGHT AND WELCOMING DESPITE THE LIMITED SPACE.

Architect | Welmay Architects
Completion | 2018
Original building | 1920
Gross floor area before | 180 m²
Gross floor area after | 250 m²
Number of rooms before | 7
Number of rooms after | 15
Number of apartments | 1
Address | Milan, Italy



From the outside, this looks like one of the typical housing blocks built for railway workers in Milan in 1920. Inside, the building has undergone radical renovation works that have transformed it in terms of both its structure and distribution. Only the building enclosure has been maintained; while everything else – foundations, roof, attic, internal insulation, systems, and internal distribution – has been redesigned from scratch. The total volume has remained the same, while the floor area has been increased by 60 square meters, thanks to the new placement of the floor slabs, staircases and reclamation of the attic. All the materials used contribute to creating a fluid space that stretches all the way to the terrace and garden. The home is designed as a vertical loft featuring a mandatory route, where getting lost and finding oneself becomes a game. The resulting sense of bewilderment magnifies the perception of the space.

